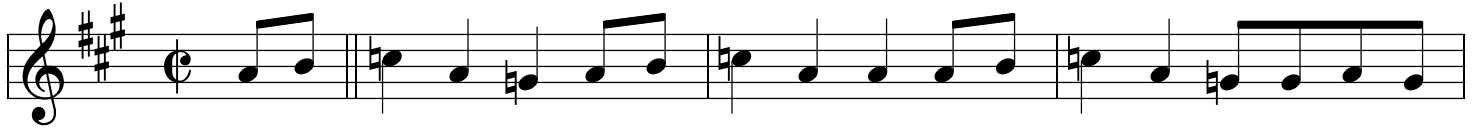


Greasy Coat

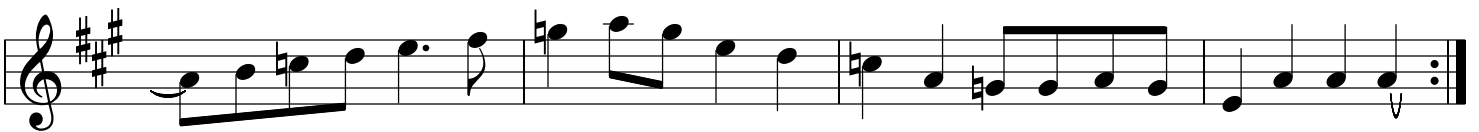
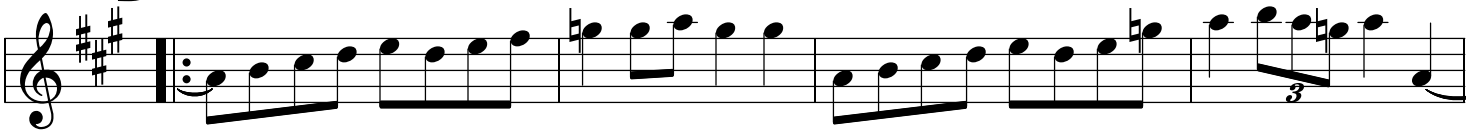
Tuning = AEae

(fiddle - Burl Hammons, Pocahontas County, WV)

A



B



Lyrics from Chance McCoy' And The Appalachian String Band)
(verses are sung on the 1st half of the A section of the tune)

- (1) I don't drink and I don't smoke
And I don't wear no greasy coat
- (2) I don't smoke and I don't chew
And I don't go with girls that do
- (3) I don't kiss and I don't tell
And those that do are going to hell
- (4) I don't cuss and I don't lie
And I'm going to heaven when I die

trans: Mark Wardenburg
January 2014

Greasy Coat p. 2

Tuning = AEae

(fiddle - Chance McCoy)

A Am C G E A

B A G

Lyrics from Chance McCoy' And The Appalachian String Band)
(verses are sung on the 1st half of the A section of the tune)

- (1) I don't drink and I don't smoke
And I don't wear no greasy coat
- (2) I don't smoke and I don't chew
And I don't go with girls that do
- (3) I don't kiss and I don't tell
And those that do are going to hell
- (4) I don't cuss and I don't lie
And I'm going to heaven when I die

trans: Mark Wardenburg
January 2014

Greasy Coat p. 3

(fiddle - Rachel Eddy)
(from her "Hand On the Plow" CD)

A

Am

C

E

A

Am

C

G

E

A

B

A

G

A

G

A

G

E

A

- (1) I don't smoke and I don't chew
And I don't go with girls that do
- (2) I don't cuss and I don't lie
And I'm going to heaven when I die
- (3) I don't drink and I don't smoke
And I don't wear no greasy coat
- (4) I don't work and I don't play
I just lay around all day

trans: Mark Wardenburg
May 2019

Greasy Coat p. 4

(Bruce Molsky - fiddle)

tuning=A E a e

(from his "Poor Man's Troubles" CD - tune is titled "Old Greasy Coat")

(source is Edden Hammons, Pocahontas County, WV)

A

Musical notation for section A, measures 1-8. The key signature is three sharps (F#, C#, G#). The notation is in treble clef. Chord markings above the staff are: Am (measures 1-2), C (measure 3), E (measure 4), A (measures 5-6), Am (measures 7-8), C (measure 9), G (measure 10), E (measure 11), and A (measures 12-13).

B

Musical notation for section B, measures 14-21. The key signature is three sharps (F#, C#, G#). The notation is in treble clef. Chord markings above the staff are: A (measures 14-15), G (measures 16-17), A (measures 18-19), G (measures 20-21), A (measures 22-23), G (measures 24-25), E (measures 26-27), and A (measures 28-29). A repeat sign is at the end of measure 29. A variation is indicated by "see *** variation" above measures 18-21. A "3" (triple) is written below the notes in measures 15, 18, and 22. A "G" chord marking is above the notes in measure 20.