

# Shades of Death Creek

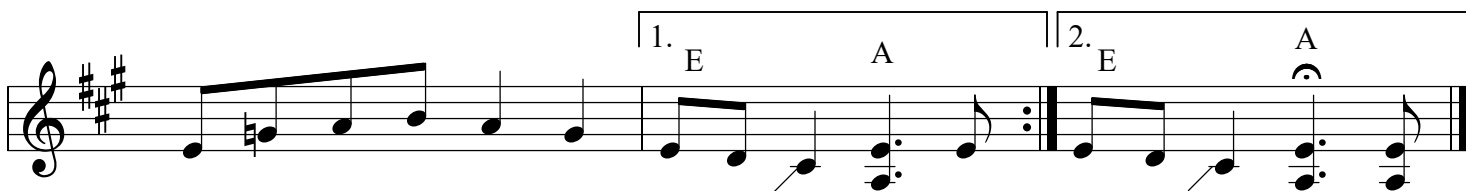
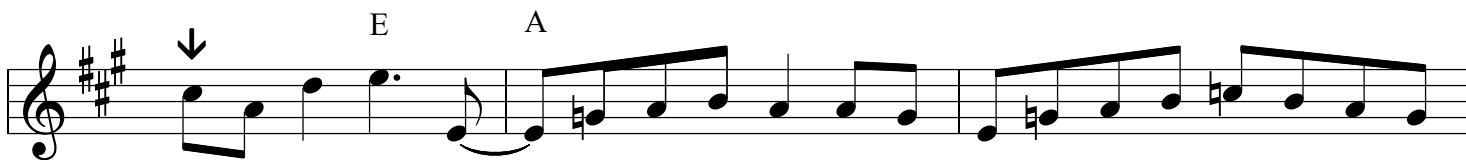
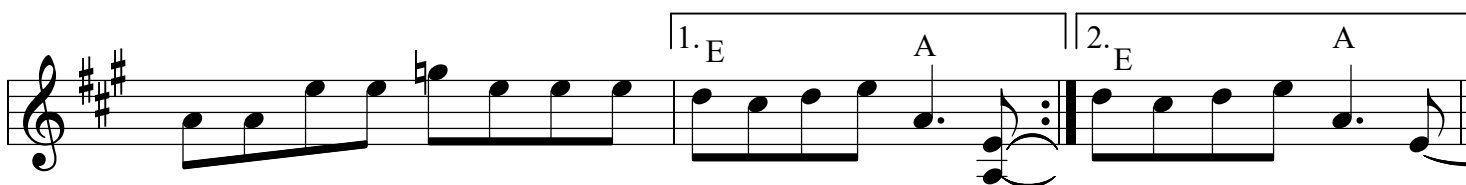
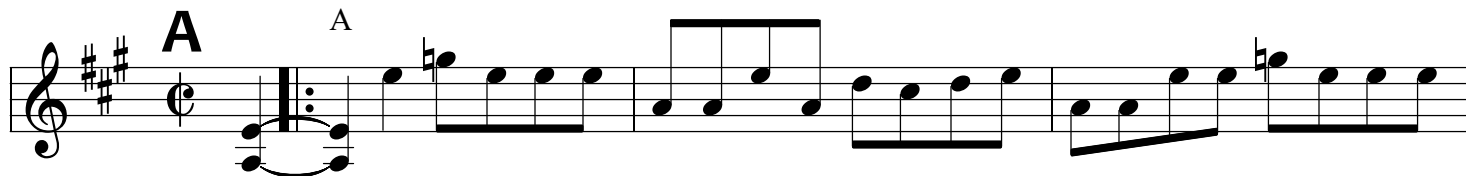
by Lynn "Chirps" Smith

(Chirps Smith - fiddle)

tuning=AEae

(from the New Bad Habits CD "Shades of Death Creek")

↓ = note is slightly below pitch



End Here

Variations - In the A section, the A and E quarter notes are sometimes played as two eighth notes and sometimes two eighth notes on A or E are played as a quarter note.

trans: Mark Wardenburg  
April 2021