

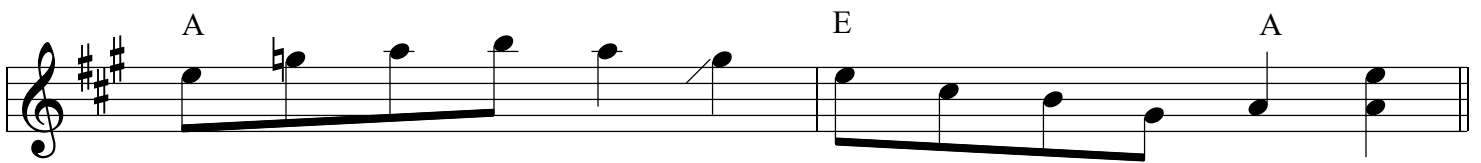
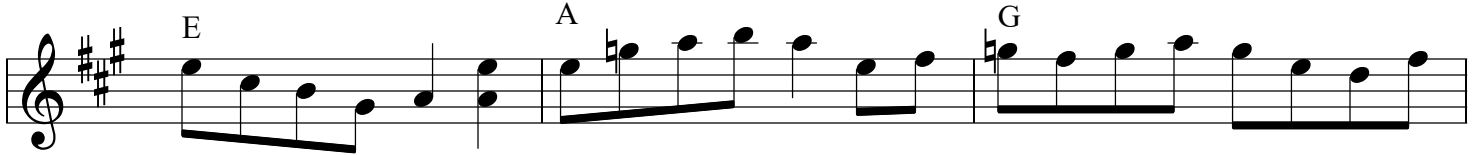
# Shelvin' Rock (A)

tuning=A E a e

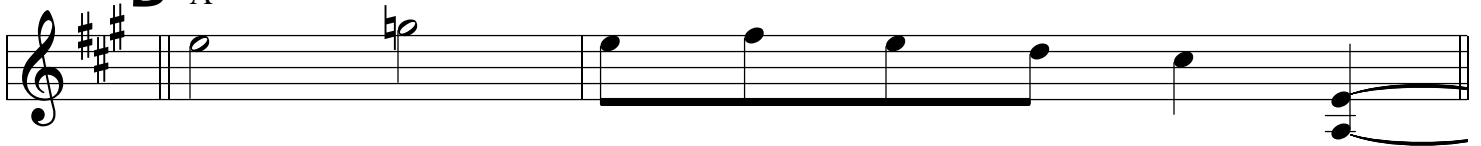
(Rhys Jones - fiddle - Bigfoot live)

(source is French Carpenter, Clay County, WV)

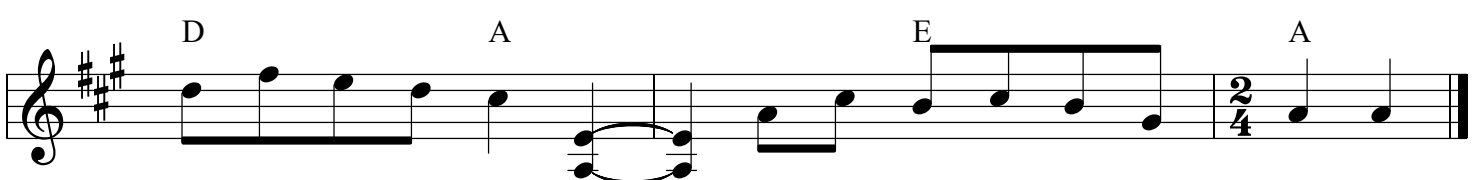
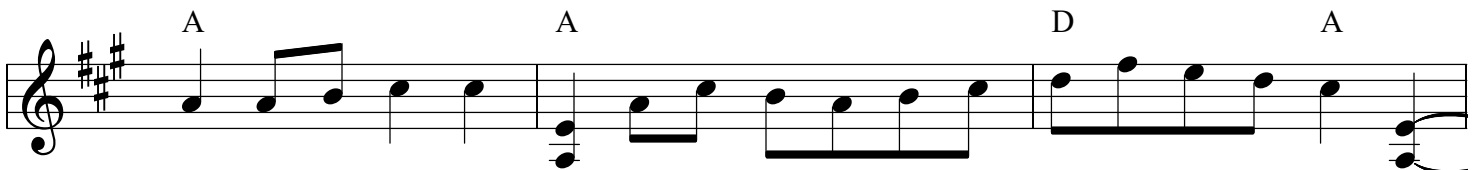
## A



## B



## C



trans: Mark Wardenburg  
February 2018

# Shelvin' Rock (A) p. 2

(Bruce Molsky - fiddle)

tuning=A E a e

(source is French Carpenter, Clay County, WV)

**A** A G A

E A G

A E A

**B** A

**C** A D A E

A A D A

E A A

D A E A

2/4

trans: Mark Wardenburg  
February 2018