

Down At The Mouth Of Old Stinson

tuning=A D A e

(Ray Leach - fiddle)
(Centralia Parlor Pickers Society)

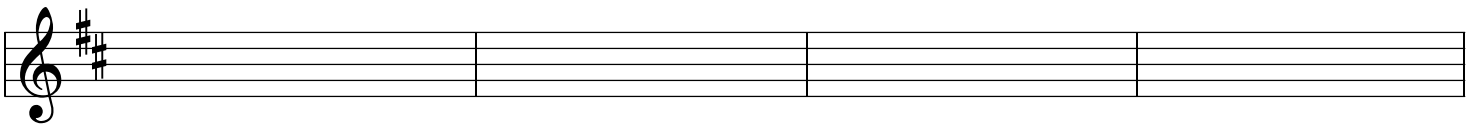
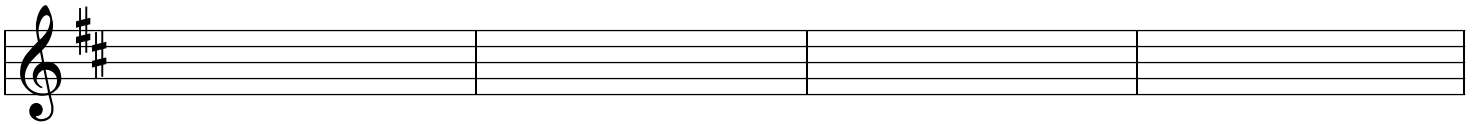
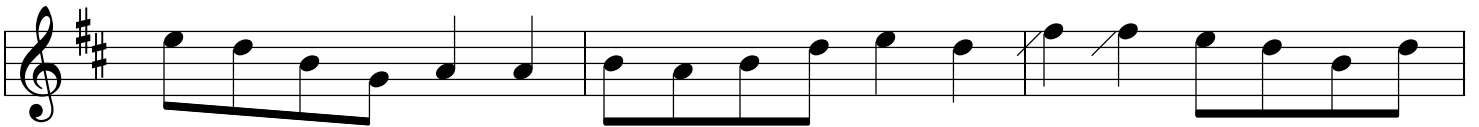
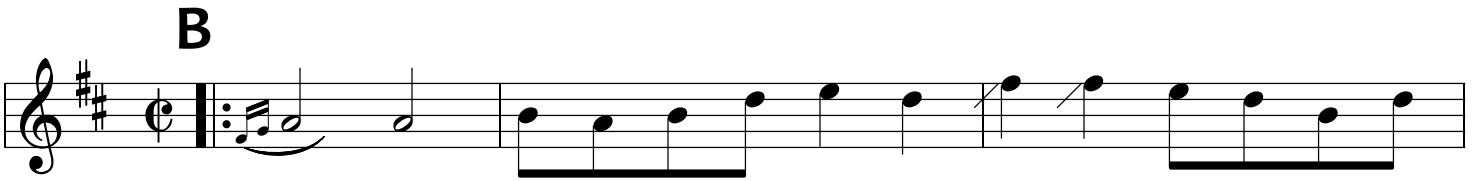
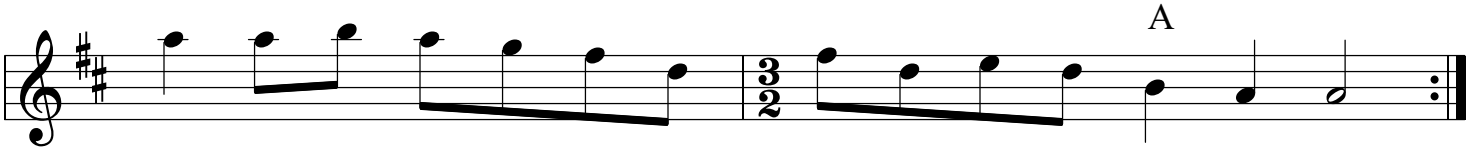
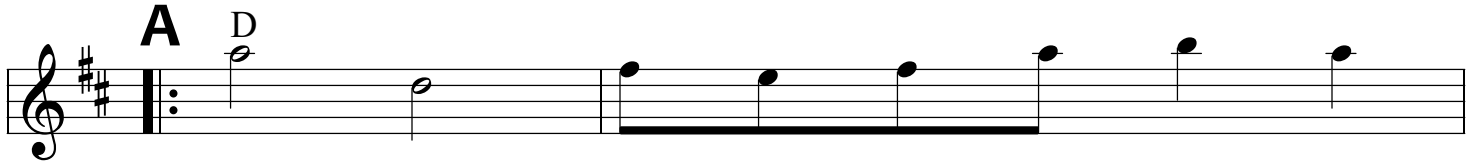
A

B

Down At The Mouth Of Old Stinson p. 2

tuning=A Dae

(French Carpenter - fiddle)

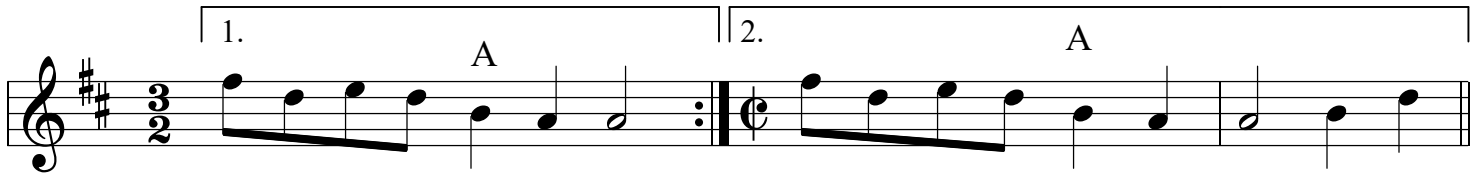
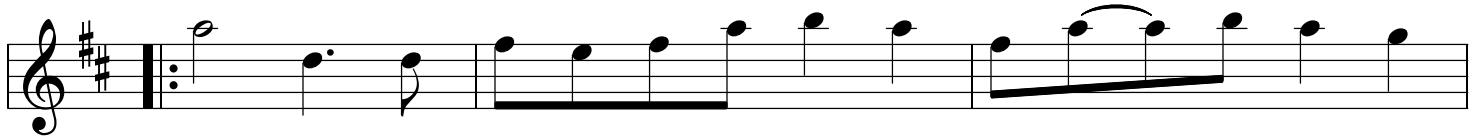


tuning=ADae

Down At The Mouth Of Old Stinson p. 3

(Wilson Douglas - fiddle)

A D



B

