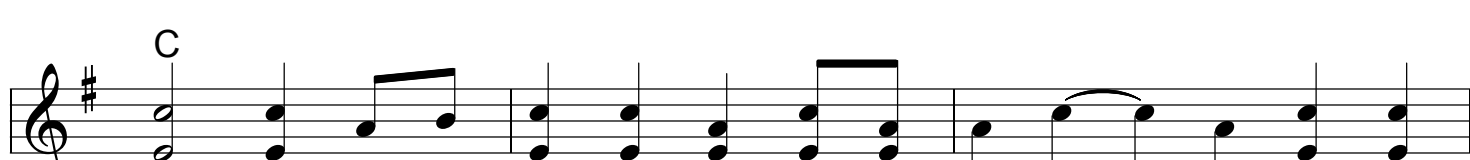
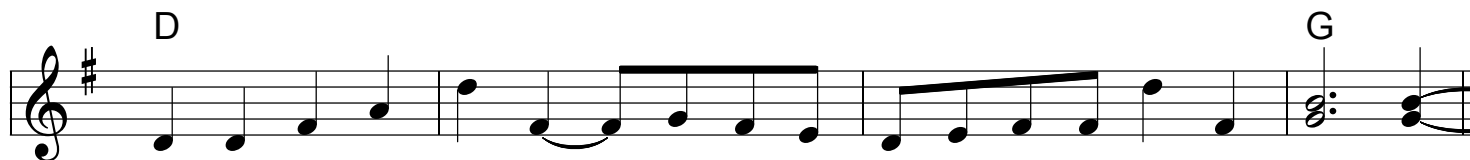
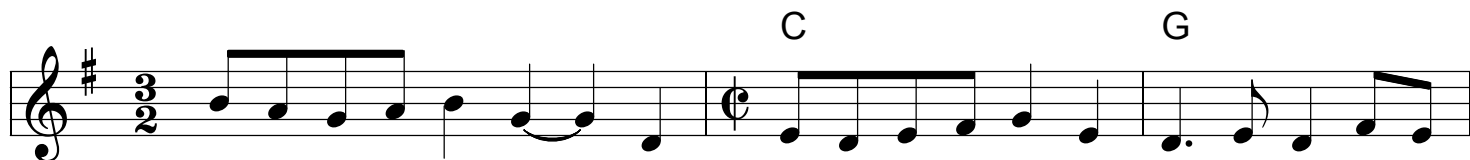
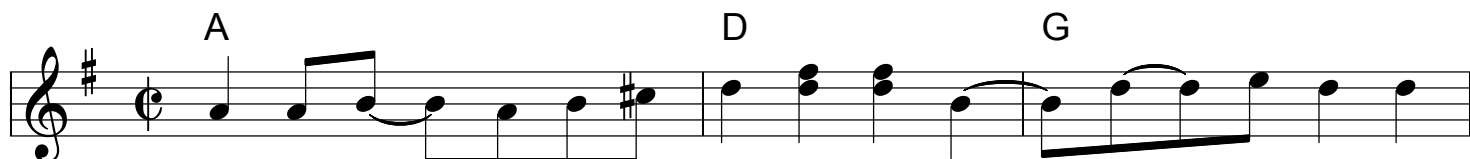
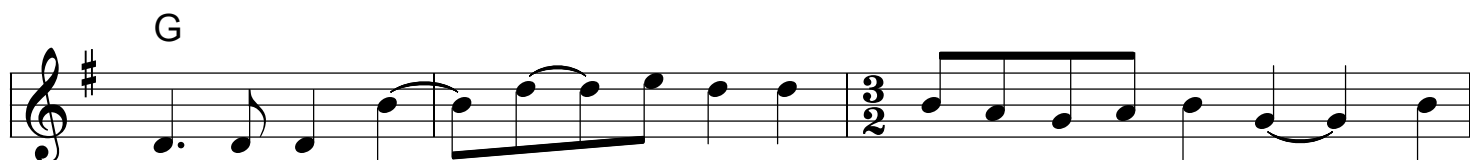
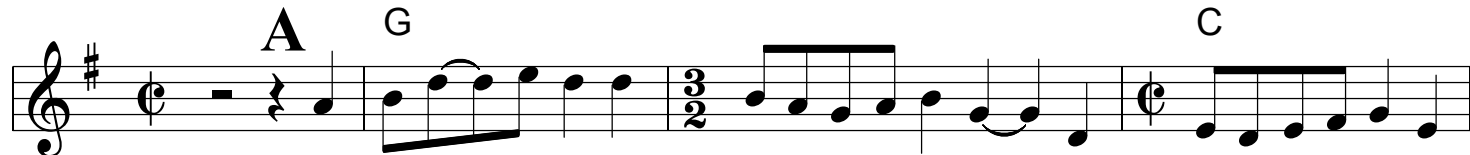


Evening Shade

(Al & Barbara Lubanes - fiddles)



Evening Shade p. 2

(Plank Road String Band)

A

G **C**

G

A **D** **G**

C **G**

D **G**

B **G**

C

D **G** **G**

A' (Alternate start of A section on the repeat of A)

Detailed description: The musical score is written for a string band in G major (one sharp). It consists of ten staves. Section A (measures 1-12) starts with a repeat sign, followed by a 3/2 time signature. Chords G and C are indicated. Section B (measures 13-20) starts with a repeat sign and a G chord. Section A' (measure 21) is an alternate start of section A. The score includes various musical notations such as beams, slurs, and repeat signs.