

Pear Tree

(Suzy Thompson - fiddle - from a fiddle workshop)

(source is Gaither Carlton, Watauga, NC)

A

Section A consists of three staves of music in the key of D major (one sharp). The first staff begins with a treble clef and a key signature of one sharp. It contains a sequence of notes with various bowing directions (up and down bows) and fingering (square boxes). Chord markings G, D, and C are placed above the staff. A repeat sign with first and second endings is present. The second staff continues the melody with similar bowing and fingering. The third staff concludes the section with a repeat sign and first and second endings, with chord markings 1. G and 2. G.

B

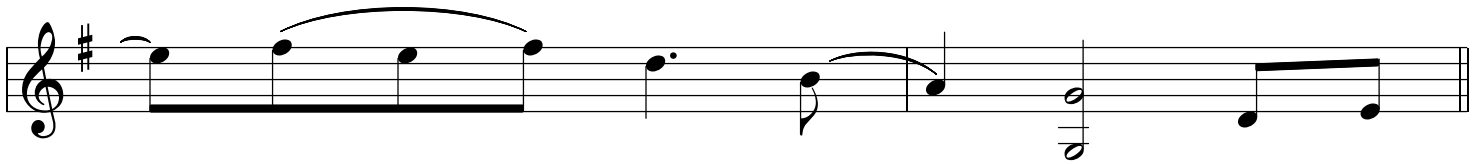
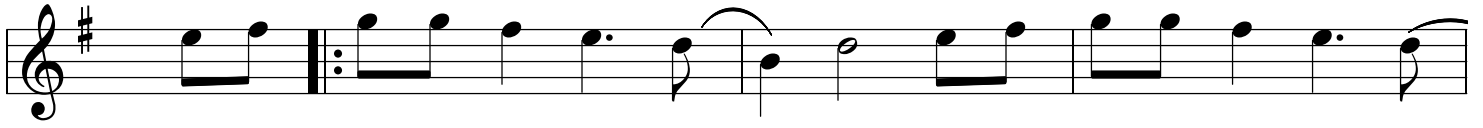
Section B consists of three staves of music in the key of D major. The first staff begins with a treble clef and a key signature of one sharp. It contains a sequence of notes with various bowing directions and fingering. Chord markings G, D, and V are placed above the staff. The second staff continues the melody with similar bowing and fingering. The third staff concludes the section with a treble clef and a key signature of one sharp, containing notes with bowing and fingering, and chord markings G and V.

trans: Mark Wardenburg
May 2020

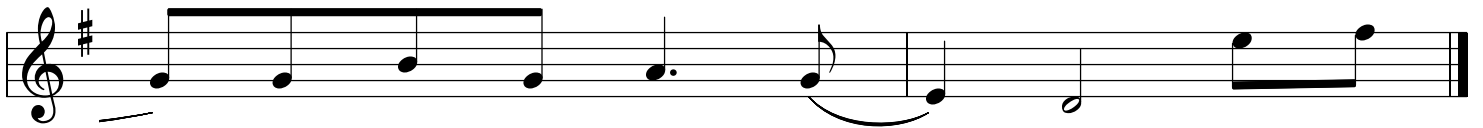
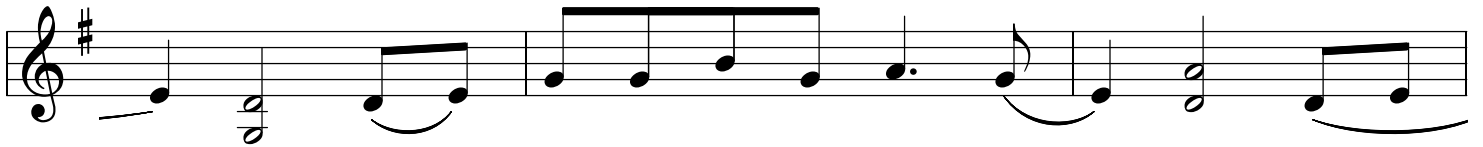
Pear Tree p. 2

(Gaither Carlton - fiddle - Watauga, NC)

A



B



trans: Mark Wardenburg
May 2020