

Tombigbee Waltz

James Bryan - fiddle
from his "Lookout Blues" recording
learned tuned from Tom Jackson
This is an old tune that was published in 1909.

A

Musical staff for section A, first line. Treble clef, key signature of one sharp (F#), 3/4 time signature. The staff contains a melody starting with a quarter note G4, followed by a quarter note A4, a quarter note B4, and a quarter note C5. A double bar line with repeat dots follows. The melody continues with a quarter note G4, a quarter note F#4, a quarter note E4, and a quarter note D4. A second measure contains a dotted quarter note G4 and an eighth note A4.

Musical staff for section A, second line. Treble clef, key signature of one sharp (F#), 3/4 time signature. The staff contains a melody starting with a quarter note G4, a quarter note A4, a quarter note B4, and a quarter note C5. A double bar line with repeat dots follows. The melody continues with a quarter note G4, a quarter note F#4, a quarter note E4, and a quarter note D4. A second measure contains a dotted quarter note G4 and an eighth note A4.

Musical staff for section A, third line. Treble clef, key signature of one sharp (F#), 3/4 time signature. The staff contains a melody starting with a quarter note G4, a quarter note A4, a quarter note B4, and a quarter note C5. A double bar line with repeat dots follows. The melody continues with a quarter note G4, a quarter note F#4, a quarter note E4, and a quarter note D4. A second measure contains a dotted quarter note G4 and an eighth note A4.

B

Musical staff for section B, first line. Treble clef, key signature of one sharp (F#), 3/4 time signature. The staff contains a melody starting with a quarter note G4, a quarter note A4, a quarter note B4, and a quarter note C5. A double bar line with repeat dots follows. The melody continues with a quarter note G4, a quarter note F#4, a quarter note E4, and a quarter note D4. A second measure contains a dotted quarter note G4 and an eighth note A4.

Musical staff for section B, second line. Treble clef, key signature of one sharp (F#), 3/4 time signature. The staff contains a melody starting with a quarter note G4, a quarter note A4, a quarter note B4, and a quarter note C5. A double bar line with repeat dots follows. The melody continues with a quarter note G4, a quarter note F#4, a quarter note E4, and a quarter note D4. A second measure contains a dotted quarter note G4 and an eighth note A4.

Musical staff for section B, third line. Treble clef, key signature of one sharp (F#), 3/4 time signature. The staff contains a melody starting with a quarter note G4, a quarter note A4, a quarter note B4, and a quarter note C5. A double bar line with repeat dots follows. The melody continues with a quarter note G4, a quarter note F#4, a quarter note E4, and a quarter note D4. A second measure contains a dotted quarter note G4 and an eighth note A4.

Musical staff for section B, fourth line. Treble clef, key signature of one sharp (F#), 3/4 time signature. The staff contains a melody starting with a quarter note G4, a quarter note A4, a quarter note B4, and a quarter note C5. A double bar line with repeat dots follows. The melody continues with a quarter note G4, a quarter note F#4, a quarter note E4, and a quarter note D4. A second measure contains a dotted quarter note G4 and an eighth note A4.

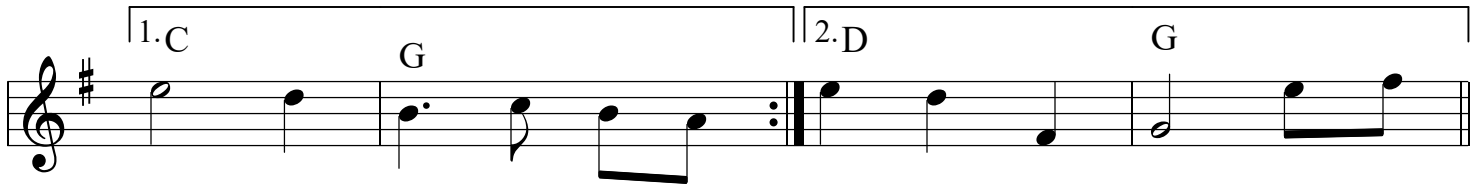
For a variation, play the entire tune down an octave

trans: Mark Wardenburg
February 2024

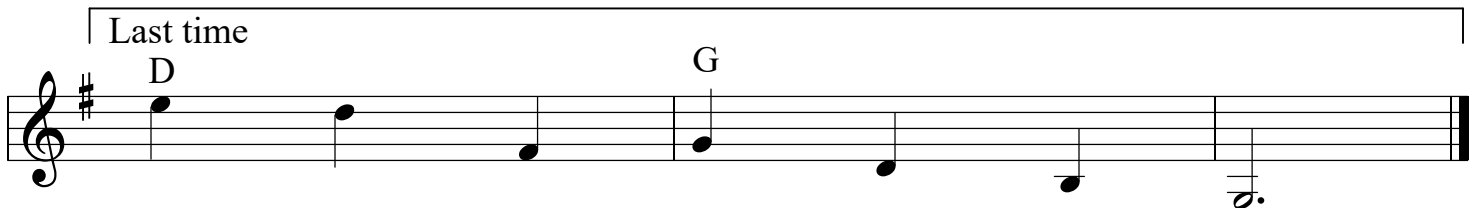
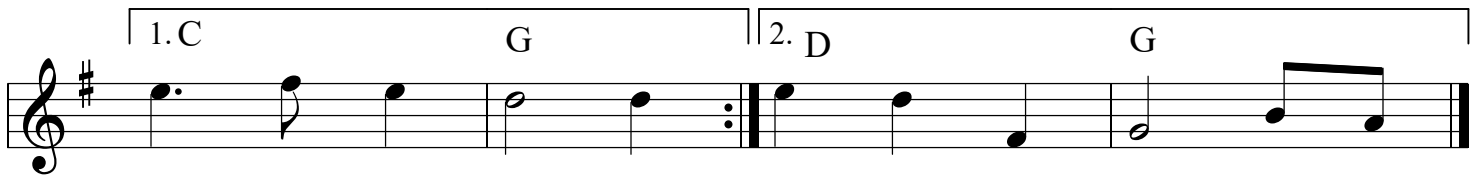
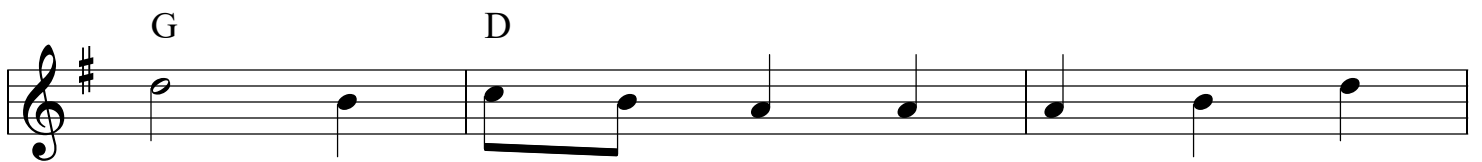
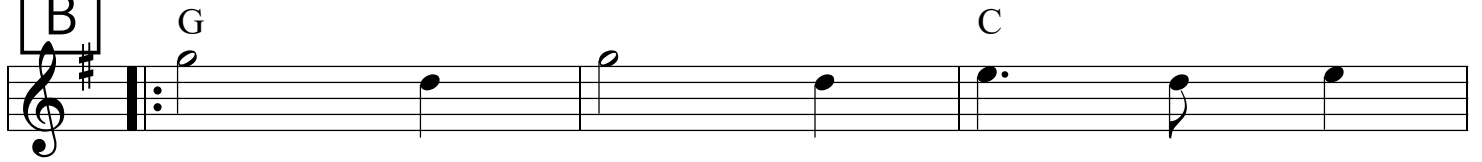
Tombigbee Waltz

Dan Levenson & Christian Wig - fiddles
from the Boiled Buzzards' "Eat At Joe's" recording
source is James Bryan who got it from Tom Jackson
This is an old tune that was published in 1909.

A



B



For a variation, play the entire tune down an octave

trans: Mark Wardenburg
February 2025