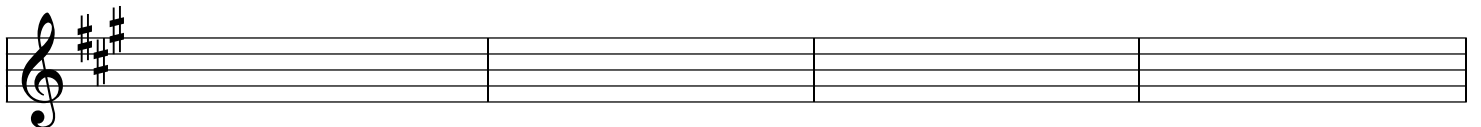
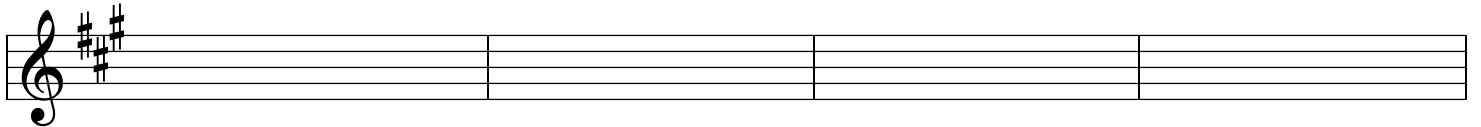
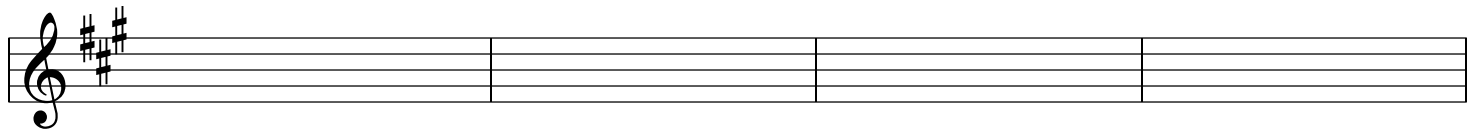
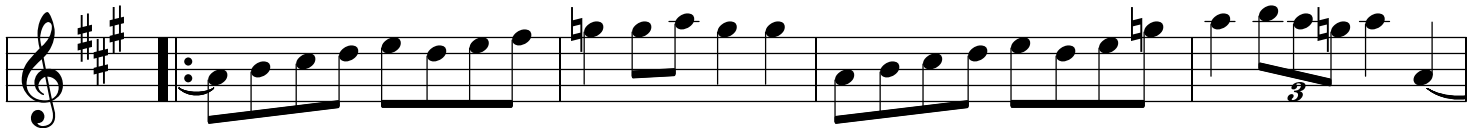
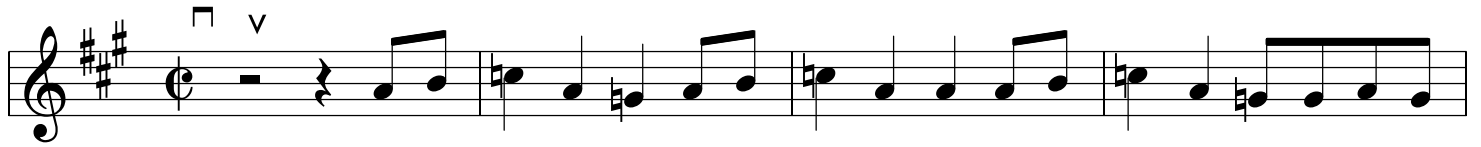


Tuning = AEae

# Greasy Coat

(fiddle - Hammons Family)



# Greasy Coat p. 2

Tuning = AEae

(fiddle - Chance McCoy)

Musical score for 'Greasy Coat p. 2' in treble clef, key of D major (two sharps). The score consists of five staves. The first staff begins with a 'v' (breath mark) and an Am chord. The second staff has C and G chords. The third staff has first and second endings for an A chord, followed by a G chord and a triplet. The fourth staff has an A chord and a triplet. The fifth staff has G, A, G, E, and A chords. The piece ends with a double bar line.

Lyrics from Chance McCoy' And The Appalachian String Band)  
(verses are sung on the 1st half of the A section of the tune)

- (1) I don't drink and I don't smoke  
And I don't wear no greasy coat
- (2) I don't smoke and I don't chew  
And I don't go with girls that do
- (3) I don't kiss and I don't tell  
And those that do are going to hell
- (4) I don't cuss and I don't lie  
And I'm going to heaven when I die