

Indian Ate A Woodchuck (D version)

(Rhys Jones version of an Ed Haley tune)

D

G

D



A

D

G



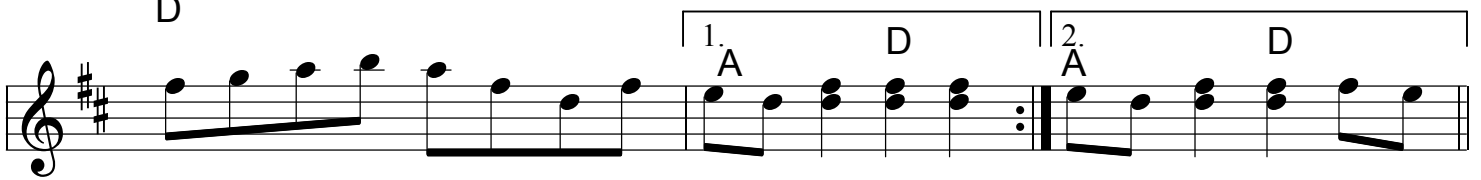
D

1. A

D

2. A

D



D

G

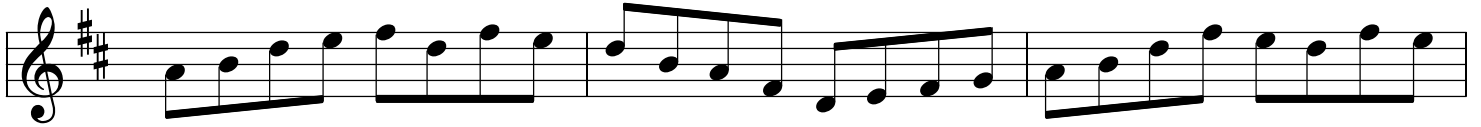
D



A

D

G



D

A

D

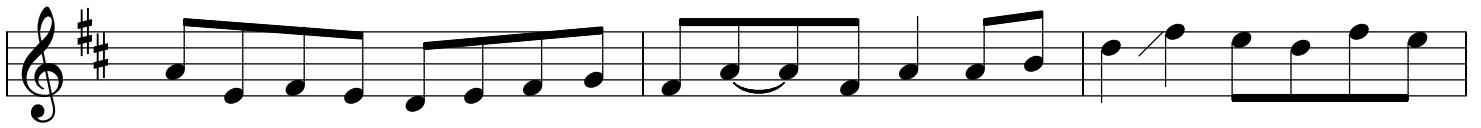
G



D

A

D

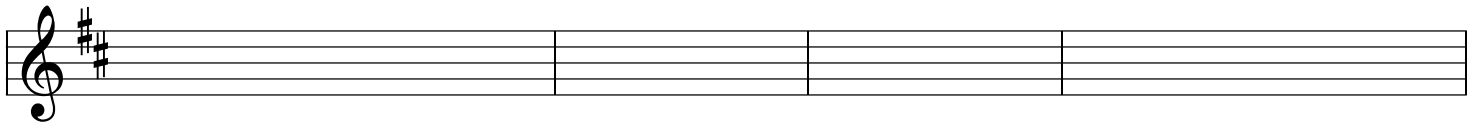


G

D

A

D



Indian Ate A Woodchuck (D version) p. 2

(Rafe Stefanini version of Ed Haley's tune)

D

G

D

A

D

G

D

1.

D

2.

A

D

D

G

D

A

D

G

D

A

D

G

D

A

D

G

D

A

D

Indian Ate A Woodchuck (D version) p. 3

(Bruce Molsky version of an Ed Haley tune)

Musical staff 1 (measures 1-4). Chords: D, G, D. Includes fingerings and accents.

Musical staff 2 (measures 5-8). Chords: A, D, G. Includes fingerings and accents.

Musical staff 3 (measures 9-12). Chords: D, A, D. Includes first and second endings.

Musical staff 4 (measures 13-16). Chords: D, G, D. Includes a trill.

Musical staff 5 (measures 17-20). Chords: A, D, G. Includes fingerings and accents.

Musical staff 6 (measures 21-24). Chords: D, A, D, G. Includes first and second endings.

Musical staff 7 (measures 25-28). Chords: D, A, D, G. Includes fingerings and accents.

Musical staff 8 (measures 29-32). Chords: D, A, D. Includes fingerings and accents.

Musical staff 9 (measures 33-36). Chords: D, A, D. Includes fingerings and accents.