

Lost Girl

(Greg Canote - fiddle)
(source is Bayard's Drum and Fife Book)

A G



D

G



D

G



D

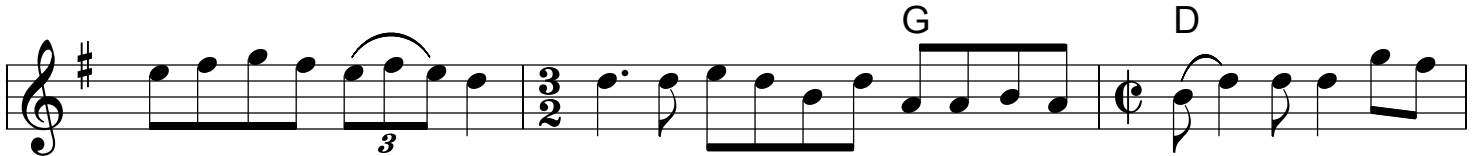
G



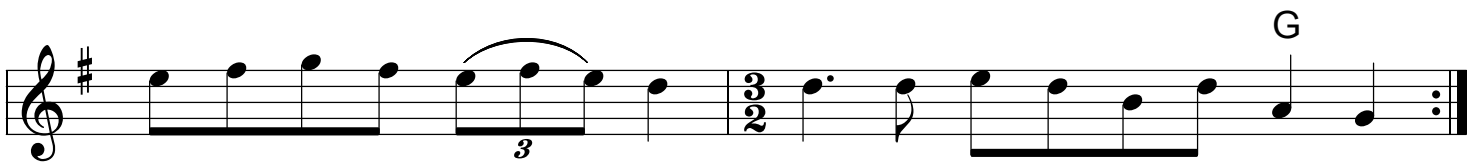
B G



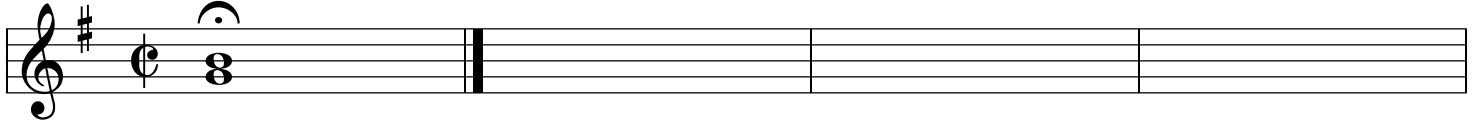
D



D



last time



Lost Girl p. 2

(Rafe Stefanini - fiddle)

(source is Marion Reese)

A

Musical notation for section A, measures 1-12. The key signature is one sharp (F#) and the time signature is common time (C). The notation includes a repeat sign at the beginning, slurs, accents, and a triplet in measure 12.

B

Musical notation for section B, measures 13-18. The key signature is one sharp (F#) and the time signature is common time (C). The notation includes a 3/2 time signature change in measure 14, slurs, and triplets in measures 15 and 17.

last time

Musical notation for the 'last time' section, measures 19-21. The key signature is one sharp (F#). The notation shows a whole note chord in measure 19, followed by two empty staves.