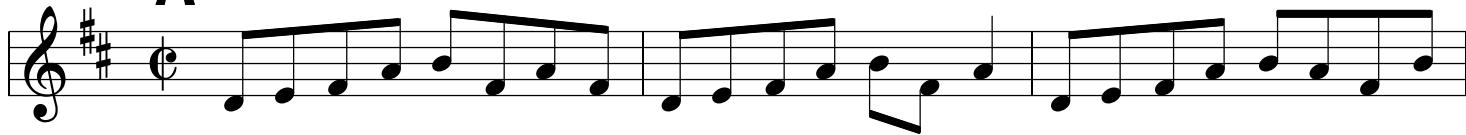


Martha Campbell

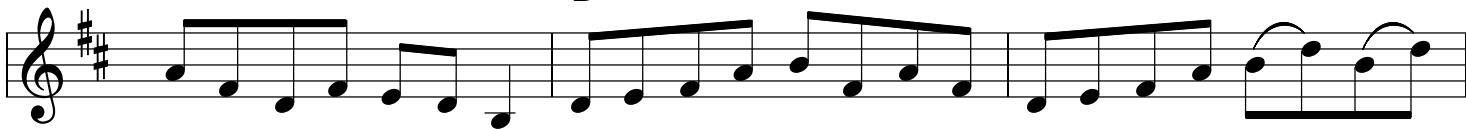
(Buddy Thomas - fiddle)

A D



A

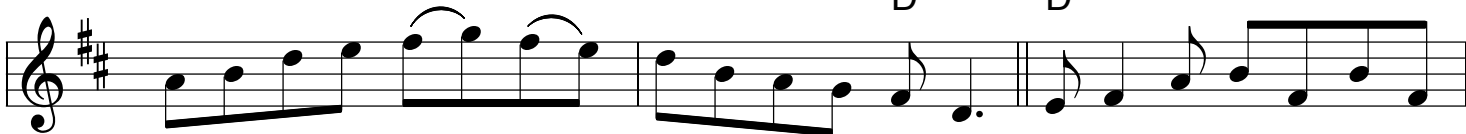
D



A

D

D



A

D



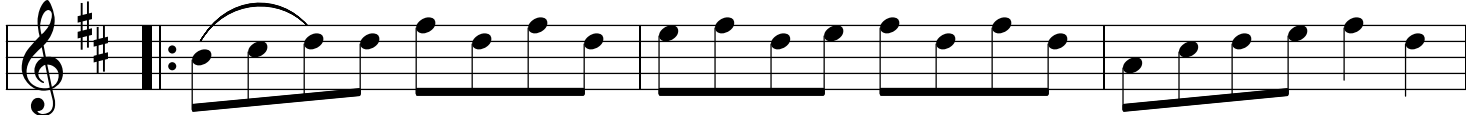
A

D



B

D



A

D



1.

A

D

2.

A

D



Martha Campbell P. 2

(Buddy Thomas - fiddle)

A D

A D

A D D

A D

A D

A D

B D

A D

1. A D 2. A D

Detailed description: The image shows a musical score for a piece titled 'Martha Campbell P. 2' by Buddy Thomas, originally a fiddle tune. The score is written in treble clef with a key signature of two sharps (F# and C#). It is divided into two main sections, A and B. Section A consists of six staves of music, starting with a treble clef and a key signature of two sharps. The first staff begins with a large 'A' and a 'D' chord symbol. The music features a mix of eighth and sixteenth notes, with some slurs and ties. Section B begins with a double bar line and a repeat sign, followed by a 'D' chord symbol. It consists of three staves. The first staff of section B has a large 'B' above it. The second staff has 'A' and 'D' chord symbols. The third staff has a first ending (marked '1.') and a second ending (marked '2.'). The first ending leads back to the beginning of section B, while the second ending concludes the piece. Chord symbols 'A' and 'D' are placed above the notes to indicate the harmonic structure.